



# C.C.S.S. NEWS

*December 2010 Volume 14, Number 21*

The purpose of the Colorado Cactus and Succulent Society is to promote knowledge, enjoyment, cultivation and conservation of cacti and other succulent plants amongst its members, other individuals and organizations throughout Colorado.

## **DECEMBER MEETING**

**WHEN:** Tuesday, December 14, 2010  
**WHERE:** Morrison Center, Denver Botanic Gardens  
**TIME: 6:00 PM**

**SPEAKER:** YOU, The Member!

This will be a Holiday potluck! Panayoti will cook a turkey; you will need to bring a side dish! The society will provide the plates, napkins, plasticware, glasses.

If you wish to participate in the program, send Panayoti up to 10 digital photos by Monday, 12/13, to [panayoti.kelaidis@gmail.com](mailto:panayoti.kelaidis@gmail.com), and he will compile them into a presentation. These images can be succulents and/or cacti in nature, your garden, or other relevant places. If you don't have digital photos, bring prints or plants to show.

^^^^^^^^^^^^

We will vote on the 2011 slate of officers listed below or by nominations at the meeting.

President: Panayoti Kelaidis  
Vice-President, Programs: Randy Tatroe  
Vice-President, Show & Sale: Jim Weedin  
Secretary: Open  
Treasurer: Diane Carnahan  
Member-at-Large: Ellen Taylor  
Webmaster: Scot Hume  
Newsletter: Keith Woestehoff

From the temporary newsletter editor—Please send your January articles, etc to Keith Woestehoff the 2011 newsletter editor: (719) 481-4595; [keith.d.woestehoff@comcast.net](mailto:keith.d.woestehoff@comcast.net).

CCSS, 2010 Denver Chapter Officers

President, Jim Weedin  
[Jim.Weedin@comcast.net](mailto:Jim.Weedin@comcast.net) or  
(c)303-601-1952 or (h)303-366-7843

1st Vice President, Programs  
Panayoti Kelaidis  
303-368-7530 / [panayotik@yahoo.com](mailto:panayotik@yahoo.com)

3rd Vice President, Show & Sale  
Harriet Olds  
720-962-9070 / [hare@harrietolds.com](mailto:hare@harrietolds.com)

Ken Sipsey  
303-987-2911 / [ksipsey@q.com](mailto:ksipsey@q.com)

Secretary, Dianne Carnahan [deacunlimited@comcast.net](mailto:deacunlimited@comcast.net)

Treasurer, Open

Member-at-Large, Ellen Taylor  
303-249-6553 / [tlme5168@msn.com](mailto:tlme5168@msn.com)

Webmaster, Scot Hume  
719-598-6106 / [Scot\\_hume@yahoo.com](mailto:Scot_hume@yahoo.com)

Newsletter: Teresa Weedin (temporary)  
[weedn@comcast.net](mailto:weedn@comcast.net)

## **Report on the DBG Plant Society Affiliates Annual Meeting—November 2010 by Jim Weedin**

The DBG plans to have a plant society meeting room ready by early 2011. This modular building will be about 1650 sq. ft. and should seat 75 people. It will be on the grounds of DBG and include restrooms, kitchen facilities, tables and a projection screen. This will open up Gates Hall and other areas when club meetings overlap.

Membership dues will remain \$300/annually for societies with over 50 members. This allows us to use DBG for meetings, the show and sale, etc.

DBG now “recommends” that 50% of a society’s members be DBG members. This is no longer a “requirement.” CCSS easily meets the final

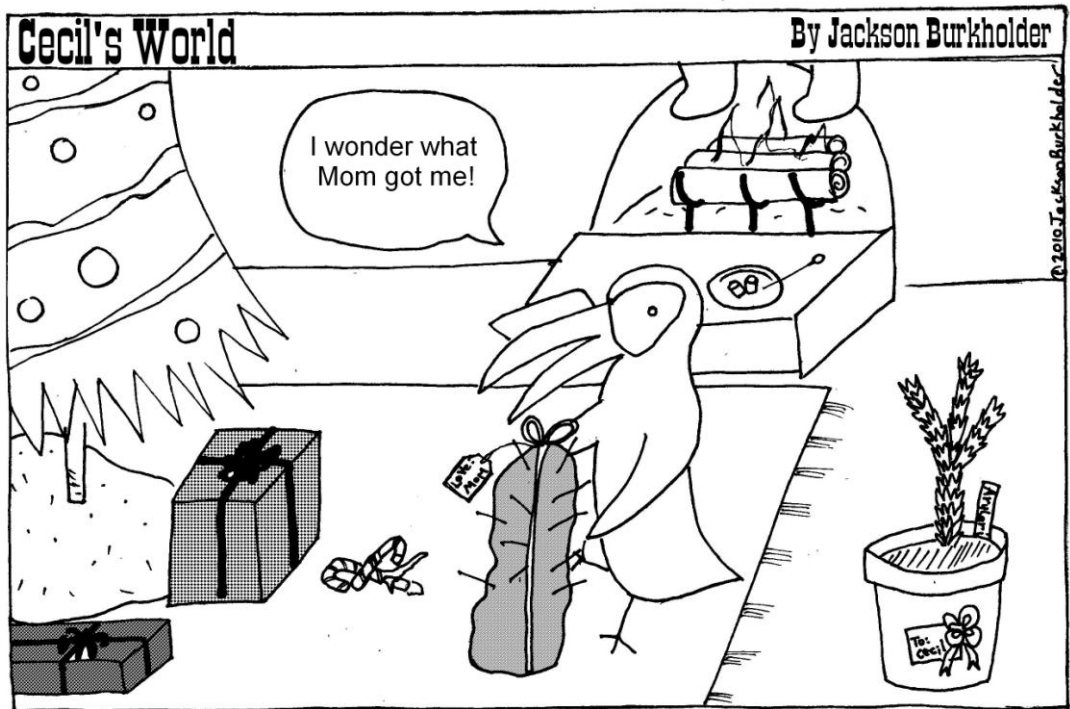
required contribution of 50 volunteer hours/year by virtue of the Show and Sale.

CCSS will often be meeting the same evening as the orchid society.

### THIS PLANT NEEDS A NEW HOME!



Former CCSS member, Connie Mansour, has a barrel cactus (*Ferocactus wislizeni*) to sell for \$40. She prefers to sell to serious growers. Cactus was from a reputable Arizona source. Please email [conniethecarpenter@gmail.com](mailto:conniethecarpenter@gmail.com), or call Connie in Boulder at 303-415-1916





# STICKY NOTES

News of the Walking Stick Chapter of the Colorado Cactus and Succulent Society

## WALKING STICK 2010 CHAPTER OFFICERS

President: Don Barnett  
(719) 543-8472  
cdbarnett3@q.com

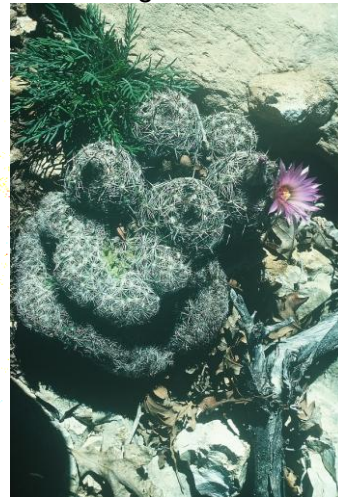
Co-Vice Presidents/Program Chairs: Regis Opferman  
(719)676-3911  
ROpferman@GHValley.net

Membership Chair: Liz Catt  
(719)544-2684  
Liz@secwcd.com

Secretary (newsletter): Dave Spenny  
(719)543-8325  
David.Spenny@Colostate-Pueblo.edu

Treasurer: Bill Adams  
(719)546-0047  
Suncscapes@comcast.net

The photo of the crested *Escobaria vivipara* was taken in 1977. When Dave returned there a few years later, it was in a much weaker condition. And by the mid 1990's it was no longer to be found.



## DECEMBER MEETING

Holiday luncheon/party on Dec 12, Sunday starting at 1-2 PM. It will be at Glenn Granthams residence at: 9838 State Highway 96, Olney Springs, Colorado 81062

Directions: from I-25 and Highway 50, head east on Highway 50 though Pueblo until you come to the turnoff to Highway 96 to Boone ( a few miles past the turnoff to the Pueblo Airport)

Head east on Hwy 96 about 20 miles to Olney Springs.

Continue east on Hwy 96 past Olney Springs.

Just past ( 1/4 mile) mile marker 97, there will be a blue house on the south side (9838)

This is where we will be. (See Page 6 for more info.)

\*\*\*\*\*

## Walking Stick Enjoyed Slide Show, Part 2

Dave Spenny and Deb Veeder presented the second part of their canyon country slide show at the November meeting. This part was on the Grand Canyon and included many views of the Grand Canyon and the cactus, succulents and other plants that are found there. The accompanying photos are some of the more interesting ones from that show. Here are a few comments on these photos.

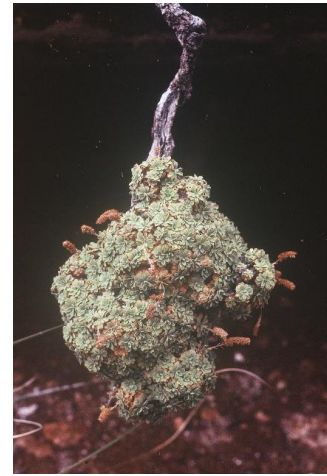
Ferocactus acanthodes (two photos) is present in the Grand Canyon as an extension of Mojave Desert flora up the gorge of the Colorado River.





The photo of rock-mat (*Petrophytum caespitosum*) shows the cluster of leathery leaved rosettes suspended from the stem of the plant. The stem is rooted above the plant in a seep in the overhanging rock. Rock-mat is not really a succulent, but with such a neat plant, who really cares!

The photo of Deb 'strolling' along the Colorado River gives you an idea of how much work is needed to get around in the Grand Canyon. The rock at the bottom of the canyon here is Vishnu Schist, a metamorphic rock. These rocks were laid down before the Cambrian era, the era of plentiful multi-celled organisms.



The Tonto Trail (with agave) is a trail that parallels the Colorado River for many miles. It follows the Tonto platform, a relatively wide and somewhat level feature that gives the hiker lots of views into the inner gorge.

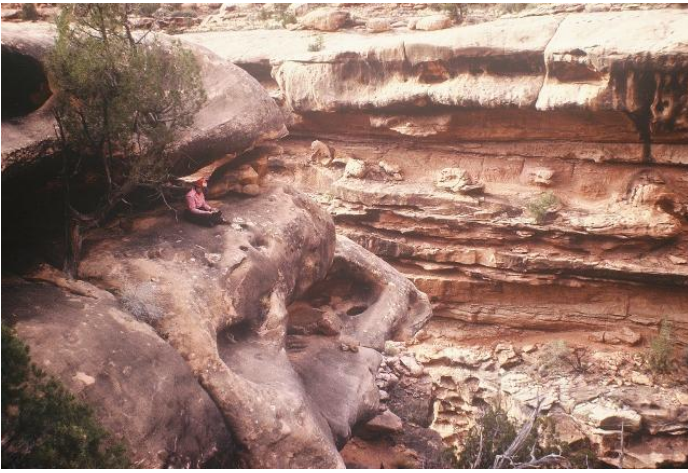


The misty view of the area near the Tanner Trail is unique in the Grand Canyon. The red rock there consists of sloped pre-Cambrian sedimentary beds that are younger than the Vishnu Schist shown in the photo of Deb's 'stroll', but still not containing any significant fossils.



The photo of Deb near the Tuckup trail (below) was taken during Deb and Dave's first wedding anniversary trip along the Esplanade, a bench high above the Colorado River.





During that 10-day backpack trip, they relied entirely on finding water that had collected in potholes during the last storm.

Below are some additional photos from the presentation



**Arborescent *Opuntia chlorotica***



***Echinocactus polycephalus* and Colorado River**



**Storm along Tuckup Trail**



**Upper Deer Creek Falls and Deb**



***Echinocereus englemanii* Crest**

# CCSS CALENDAR

## WALKING STICK CHAPTER

### DECEMBER GET-TOGETHER:

The main menu will be gourmet (Glenn is the gourmet chef) ravioli and manicotti and port flavored cranberries.

Please bring your beverages of choice and one or two choices from the following:

Italian &/ French breads

Salads

any desserts

French or Italian wines, he specifically said any Cava (spanish bubbly) wines

orange juice

Please let me (Regis) know, so I can have an idea of numbers and perhaps suggest what to bring, so that we do not all bring the same selections. Glenn goes to a lot of effort on this and it is fabulous, so please plan to attend to support his efforts.

Any Denver or Grand Junction members are also welcome to attend. RSVP is requested, but not necessary.

E-mail or call Regis Opferman (vice president) 719-676-3911

There will be no January meeting. February meeting details will be sent later, but it will be our very popular "cooking and drinking with cacti theme".

Colorado Cactus and Succulent Society  
516 Seward Park Avenue,  
Albuquerque, NM 87123  
Address Correction Requested

**Check out CCSS on Facebook!**  
**[www.facebook.com/CoCSS](http://www.facebook.com/CoCSS)**

**Member-at-large Ellen Taylor:**  
**[tme5168@msn.com](mailto:tme5168@msn.com)**  
**phone: 303-249-6553**

**Visit CCSS Online**  
**[www.ccss-online.org](http://www.ccss-online.org)**